

HUMAN GENETIC SIGNATURES



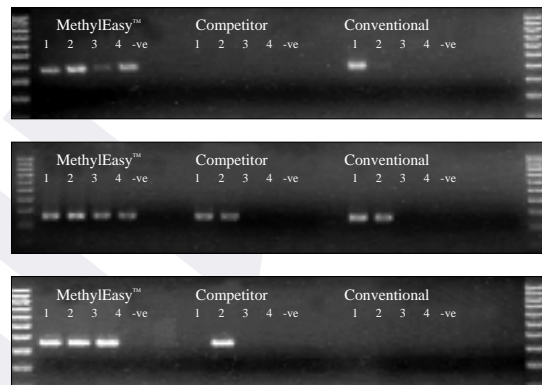
MethylEasy™ DNA Bisulphite Modification Kit

Breakthrough in Methylation Detection

- Reduce bisulphite DNA loss by more than 90% to obtain truly representative analysis of methylated cytosines



Lane 1 : DNA recovered after **MethylEasy™** conversion
Lane 2 : DNA recovered after conventional bisulphite conversion



Lane 1 : 100ng of starting DNA,
Lane 2 : 10ng of starting DNA,
Lane 3 : 1ng of starting DNA,
Lane 4 : 100pg of starting DNA

- Start from as little as 100 picograms of DNA
- Substantially reduce non-conversion
- Quick and Easy to use :
No DNA pre-treatment, One tube reaction, No column purification

- From the inventors of the original bisulphite method*

*1992, Frommer et al, Pro. Nat. Acad. Sci.USA, 89,1827-1831.

US and International Patents Pending

For further information on **MethylEasy™**, visit our website at www.geneticsignatures.com

Email : methyleasy@geneticsignatures.com

Phone : +61 2 9870 7580

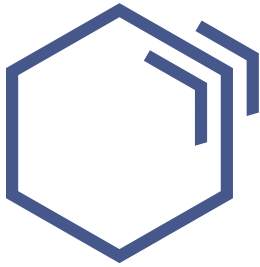
Fax : +61 2 8569 0373

Human Genetic Signatures Pty Ltd

22 Delhi Road

Macquarie Park Sydney NSW Australia 2113





HUMAN GENETIC SIGNATURES

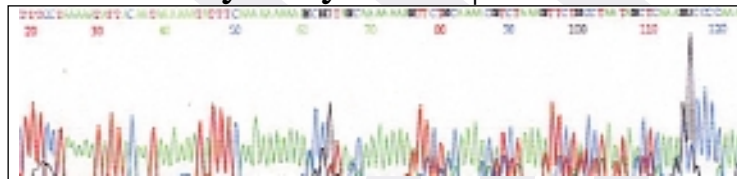


MethylEasy™ DNA Bisulphite Modification Kit

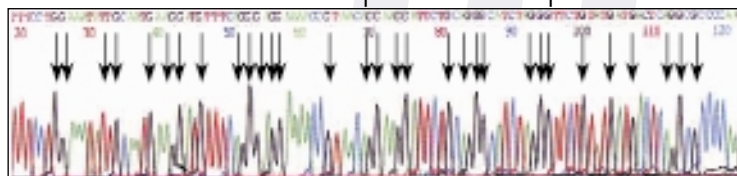
Conventional bisulphite treatments utilized to date result in the loss of up to 96% of the starting DNA¹, require restriction endonuclease digests, embedding of the DNA in agarose, multiple tube changes and column purification steps.

MethylEasy™ addresses all of these shortcomings and is a simple, quick, one tube modification method that requires no DNA pre-treatment, and involves no column purification steps. **MethylEasy™** results in virtually no loss of DNA, improved sensitivity, higher amplification efficiency, longer fragment generation and increased stability of the template DNA even at room temperature for over 1 month.

MethylEasy™ PCR product



Conventional bisulphite PCR product



Arrows denote blocked sites.

Comparison of DNA sequence obtained from a PCR fragment generated with **MethylEasy™** and conventional bisulphite treatment. The conventional bisulphite treatment results in significantly more "blocked" sites. i.e. sites where bisulphite conversion of unmethylated cytosines has not occurred.

¹ Grunau C, Clark SJ, Rosenthal A. Bisulfite genomic sequencing: systematic investigation of critical experimental parameters. *Nucleic Acids Res.* 2001 Jul 1;29(13):E65-5

For further information on **MethylEasy™**, visit our website at www.geneticsignatures.com

Email : methyleasy@geneticsignatures.com

Phone : +61 2 9870 7580

Fax : +61 2 8569 0373

Human Genetic Signatures Pty Ltd

22 Delhi Road

Macquarie Park Sydney NSW Australia 2113

